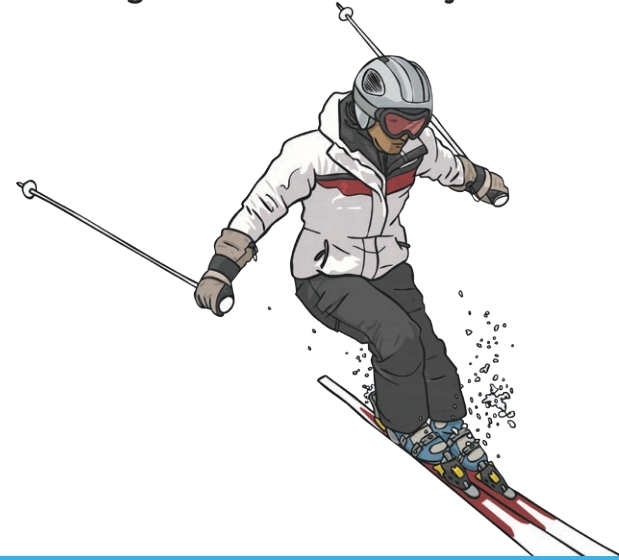


Year 4 Winter Challenge Cards

twinkl

Winter Challenge Cards

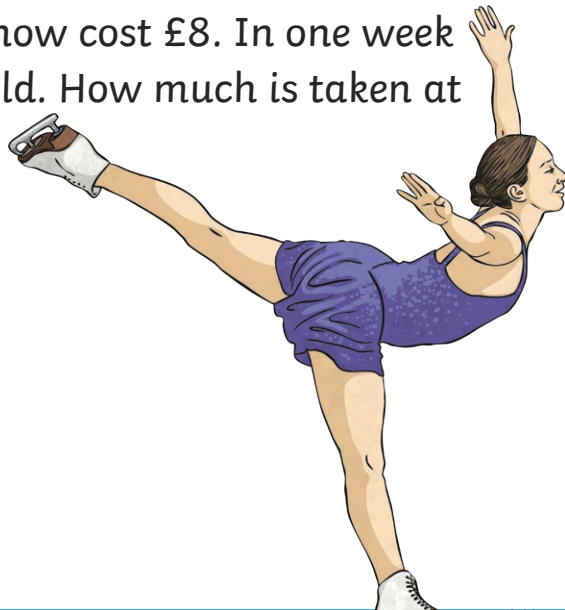
1. How many skis are needed for 529 skiers?



twinkl.co.uk

Winter Challenge Cards

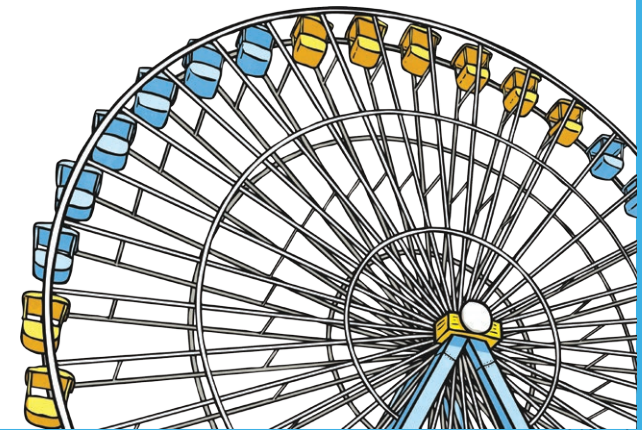
2. Tickets for an ice show cost £8. In one week 4815 tickets are sold. How much is taken at the box office?



twinkl.co.uk

Winter Challenge Cards

3. The Winter Wonderland Giant Wheel costs £6 for an adult ticket. There are 8269 adults who ride on the wheel. How much money was made on this ride?



twinkl.co.uk

Winter Challenge Cards

4. In December, 2352 people went skiing at the local ski centre. In January, the number goes up by 1399. How many people went skiing in in January?



twinkl.co.uk

Winter Challenge Cards

5. It costs £31.50 for a ticket, with a £4 booking fee per ticket, to have a seat in the stalls area to see the pantomime Cinderella. How much would it cost 4 adults to see the show?



twinkl.co.uk

Winter Challenge Cards

6. In nine weeks' time, Lily and her family are going on their skiing holiday. How many days does she have to wait?



twinkl.co.uk

Winter Challenge Cards

7. It's been an icy night, and bags of grit are sold weighing 23kg. What is the total weight of 12 bags?



twinkl.co.uk

Winter Challenge Cards

8. Spring bulbs are sold in packs of 12. How many packs can be made from 1776 bulbs?



twinkl.co.uk

Winter Challenge Cards

9. 48 people buy hot chocolate from the hot drinks van at the park. Three eighths just have marshmallows, one third just have chocolate sprinkles. The rest have both toppings. How many people have both toppings?



twinkl.co.uk

Winter Challenge Cards

10. In a restaurant, eight identical tins of Winter Warmer soup hold 14 litres altogether. How much soup is there in one tin of soup, in millilitres?



twinkl.co.uk

Winter Challenge Cards

11. Hannah's Grandma knits 72 hats for the local January jumble sale. $\frac{7}{8}$ of them are stripy. How many are not stripy?



twinkl.co.uk

Winter Challenge Cards



12. Lloyd needs £48 to buy a new coat. He has saved $\frac{5}{8}$ so far. How much money does he have left to save?

Winter Challenge Cards

13. There are 7 lollipops in a pack. How many would there be in 319 packs?



Winter Challenge Cards

14. There are 30 children at a New Year party. Two fifths drink cola. One third drink orange. How many children drink:

- a) cola?
- b) orange?
- c) other drinks?



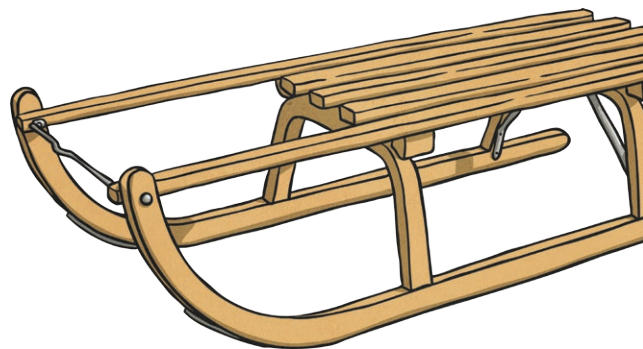
Winter Challenge Cards

15. A shop orders in 825 pairs of wellies. How many wellies will this be?



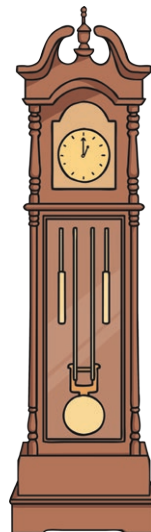
Winter Challenge Cards

16. It has been snowing! In one village, 1428 people go sledging over the weekend. There are 2195 people in the village altogether. How many people did not go sledging?



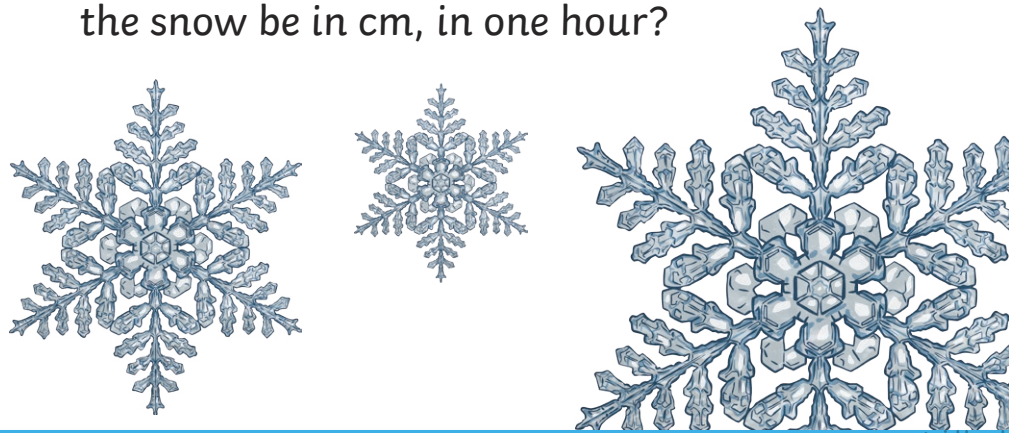
Winter Challenge Cards

17. It will get dark in 113 minutes. It is now 13:35. At what time will it be dark?



Winter Challenge Cards

18. The snow has been falling for the last 15 minutes. The snow is now 52mm deep. If it continues snowing at this rate, how deep will the snow be in cm, in one hour?



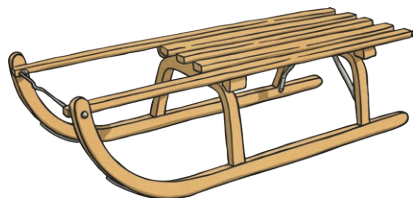
Winter Challenge Cards

19. One serving of soup is 300ml. How much soup is needed for 70 servings? Write your answer in litres.



Winter Challenge Cards

20. Ben, Jawad and Maisy went sledging. Ben went down the hill 16 times. Jawad went down the hill three times more than Maisy. Maisy went down the hill $\frac{1}{4}$ of the times that Ben did. How many times did Jawad sledge down the hill?



twinkl.co.uk

Winter Challenge Cards

Year 4 Winter Challenge Cards **Answers**

1. **1058 skis**
2. **£38 520**
3. **£49 614**
4. **3751 people**
5. **£142**
6. **63 days**
7. **276kg**
8. **148 packs**
9. **14 people**
10. **1750ml**
11. **9 hats**
12. **£18**
13. **2233 lollipops**
14. **a) 12 children; b) 10 children; c) 8 children**
15. **1650 wellies**
16. **767 people**
17. **15:28**
18. **20.8cm**
19. **21 litres**
20. **12 times**

twinkl.co.uk